

## Technical Specification (STANDARD ELEMENT)

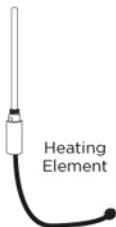
*Installation Manual***CAUTION**

The element should always be fitted into the bottom of the radiator.

***Never switch on the element if the rail is empty. Never switch the element on until it is fitted and the towel rail is filled with water.***

**Tools you might need**Adjustable  
Wrench

PTFE Tape

**For dual fuel  
part required:**T-Piece  
Connector**Parts supplied:**Heating  
Element

or

Thermostatic  
Heating  
ElementBlanking  
Plug

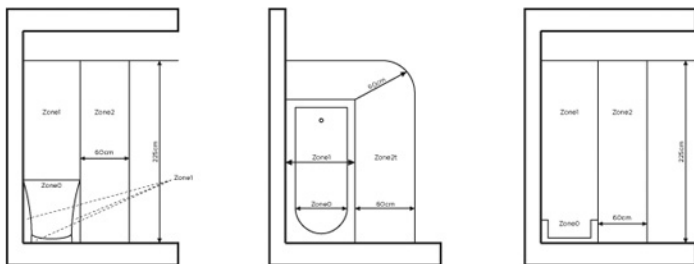
## Technical Specification (STANDARD ELEMENT)

### BEFORE INSTALLATION

- ✦ When connected to the household central heating system, (existing radiator) the bathroom radiator must be isolated from the rest of the central heating system by closing its shut off/control valves, and then drained. If isolation cannot be achieved then the complete central heating system must be drained down to below the level of the bathroom radiator.
- ✦ When fitting into the bathroom radiator, the heating element can only be installed into a radiator which has a straight section of tubing to accommodate it directly from the connection point (i.e. it is not suitable for split section double panel radiators).
- ✦ T-Piece connector required for dual fuel option only.
- ✦ The heating element is supplied complete with its own mains cable. Do not use an extension cable. It is a 3 wire product which must be earthed.
- ✦ These instructions are for guide only, if in any doubt please consult a qualified tradesman.
- ✦ It should be connected to the household wiring by a qualified electrician in accordance with the national wiring regulations (BS7671).

### POSITION

The electric element can be installed into a radiator in the bathroom or shower room. It is IP44 rated and may be installed in the Zone 2 area (see diagram below), but the electrical connection box must be outside the Zone 2 area and should be only installed by a qualified electrician

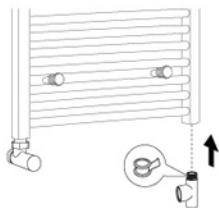


## Technical Specification (STANDARD ELEMENT)

### Dual fuel option

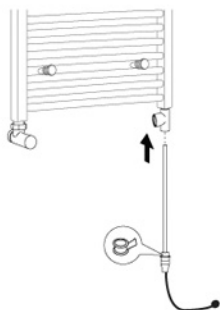
1

Install the T-Piece (sold separately) into the radiator first and tighten onto its 'O' ring seal (this T-Piece adaptor still allows the flow of water when the central heating pump is running).



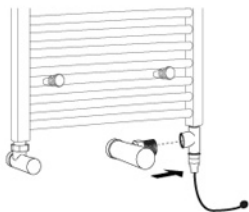
2

The heating element should then be inserted into the radiator through this adaptor and tightened onto its 'O' ring seal. Do not over tighten.



3

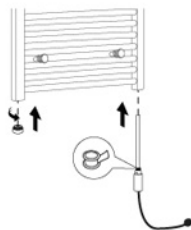
The other connection of the adaptor should be connected to the incoming central heating pipe.



### Electric only option

1

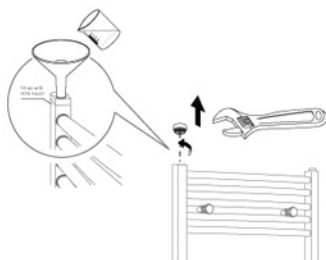
Insert element into radiator and tighten onto its 'O' ring, do not over tighten as to damage the seal. Fit blanking plug and tighten.



**Note:**  
It can only be installed into a radiator which has a straight section of tubing to accommodate it directly from the connection point (i.e. it is not suitable for split section double panel radiators).

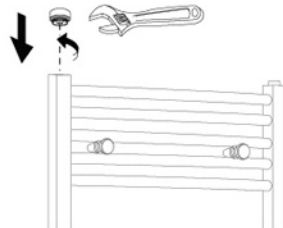
2

Take off the blanking plug by adjustable wrench anti-clockwise. Fill the radiator 90% with water and a corrosive inhibitor with anti-freeze.



3

Position the blanking plug by turning clockwise.



**Technical Specification (STANDARD ELEMENT)****SAFETY WARNINGS**

- a) This appliance is not intended for use by persons (including children) with reduced physical, sensory or mental capabilities, or lack of experience and knowledge, unless they have been given supervision or instruction concerning use of the appliance by a person responsible for their safety.
- b) Children should be supervised to ensure that they do not play with the appliance.
- c) When the central heating system is operating the heating element will cause the bathroom radiator to get hot to the touch during operation.
- d) Switch off the heating element at the supply when not in use and when the central heating system is in operation (dual fuel).
- e) Do not operate the element when there is no water in the radiator, it incorporates an overheat protection thermal fuse which may blow if this occurs.
- f) If the mains cable becomes damaged it must be replaced by a qualified person to avoid a hazard.